

**Articolo / Article OLIVO  
BIELASTICO / BIELASTIC**

Altezza pezza / Width **150 cm**  
Peso Tessuto / Weight **260 g/m<sup>2</sup>**  
Lunghezza pezza / Roll length **50 m**  
Composizione / Composition  
**91% PL - 9% EA**

**Usura martindale / Abrasion**  
N° cicli / cycles > 40.000 on wool  
**Resistenza al pilling / Resistance to pilling**  
5000 rotations 4/5 on wool (ISO 12945-2)

**Solidità alla tinta / Color fastness**  
Alla luce / to light 3/4 (ISO 105-B02)  
**Oeko-Tex® Standard 100**

Classe I  
**Ingnifugo / Flame Retardant**  
Classe 1IM (ITA)

**Extra / Extras**  
Antibatterico / Antibacterial

Tessuto **OLIVO** : un tessuto dalle nuance raffinate in grado di valorizzare al massimo il "chiaro-scuro" delle forme sinuose che abbraccia.

*Fabric **OLIVO** : a fabric with refined nuances which is capable of enhancing to the utmost light and shade of the sinuous forms it embraces.*

**Articolo / Article MORA  
BIELASTICO / BIELASTIC**

Altezza pezza / Width **140 cm**  
Peso Tessuto / Weight **220 g/m<sup>2</sup>**  
Lunghezza pezza / Roll length **70 m**  
Composizione / Composition  
**85% PL - 15% EA**

**Usura martindale / Abrasion**  
N° cicli / cycles > 40.000 on wool  
**Resistenza al pilling / Resistance to pilling**  
7000 rotations 4/5 on fabric (ISO 12945-2)

**Solidità alla tinta / Color fastness**  
Alla luce / to light 5/>5 (ISO 105-B02)  
**Oeko-Tex® Standard 100**

Classe I / Classe II  
**Ingnifugo / Flame Retardant**  
//

**Extra / Extras**  
Antibatterico / Antibacterial

Tessuto **MORA** : un velluto liscio, elasticizzato, dall'aspetto lucido e brillante. La diversa riflettanza della luce gli conferisce un effetto cangiante e raffinato.

*Fabric **MORA** : a smooth, stretch velvet, with a glossy, shiny appearance. The different reflectivity of light gives it an iridescent and refined effect.*

**Articolo / Article VITE  
BIELASTICO / BIELASTIC**

Altezza pezza / Width **150 cm**  
Peso Tessuto / Weight **190 g/m<sup>2</sup>**  
Lunghezza pezza / Roll length **70 m**  
Composizione / Composition  
**80% PL - 20% EA**

**Usura martindale / Abrasion**  
N° cicli / cycles > 40.000 on wool  
**Resistenza al pilling / Resistance to pilling**  
7000 rotations 5 on fabric (ISO 12945-2)

**Solidità alla tinta / Color fastness**  
Alla luce / to light 4/>5 (ISO 105-B02)  
**Oeko-Tex® Standard 100**

Classe I / Classe II  
**Ingnifugo / Flame Retardant**  
//

**Extra / Extras**  
Antibatterico / Antibacterial  
Idrorepellente / Water-repellent

Tessuto **VITE** : un tessuto dalle caratteristiche classiche, è una charmeuse brillante che segue le forme valorizzandone le sinuosità.

*Fabric a **VITE** : fabric with classic features characteristics, it is a brilliant charmeuse that follows shapes, enhancing their sinuosity.*

**Articolo / Article MIRTO  
BIELASTICO / BIELASTIC**

Altezza pezza / Width **140 cm**  
Peso Tessuto / Weight **210 g/m<sup>2</sup>**  
Lunghezza pezza / Roll length **70 m**  
Composizione / Composition  
**85% PL - 15% EA**

**Usura martindale / Abrasion**  
N° cicli / cycles > 40.000 on wool  
**Resistenza al pilling / Resistance to pilling**  
7000 rotations 4/5 on fabric (ISO 12945-2)

**Solidità alla tinta / Color fastness**  
Alla luce / to light 4/>5 (ISO 105-B02)  
**Oeko-Tex® Standard 100**

Classe I / Classe II  
**Ingnifugo / Flame Retardant**  
Classe 1IM (ITA)

**Extra / Extras**  
Antibatterico / Antibacterial

Tessuto **MIRTO** : un velluto "stropicciato" perfetto equilibrio tra glamour e comfort, la soluzione ideale per opere dall'alto impatto scenografico.

*Fabric **MIRTO** : a 'crumpled' velvet, perfect balance between glamour and comfort, the ideal solution for high impact works scenographic impact.*

# D.H'ILLS

## DESIGN & SURFACE FOR YOU

La collezione qui raccolta è il risultato di un'accurata ricerca di prodotti, individuati perché possano offrire un valore aggiunto al mondo **D.H'ILLS** by D.Home Italia.

Un'intera gamma di articoli combinabili per colore e strutture, in modo da creare il perfetto ambiente in ogni soluzione. Che esso sia un living, una hall d'hotel, uno spazio ricreativo, un ufficio, ecc.

Dal morbido velluto, al tessuto cangiante, passando per il velluto "stropicciato", per offrire una gamma di prodotti completa ed insostituibile.

Facili da coordinare, questi articoli possono essere utilizzati dal cliente più esigente, sia per il loro look e per le performance che mettono a disposizione.

Tutti i tessuti presenti all'interno di questa collezione sono **BI-ELASTICI**, peculiarità imprescindibile per potersi adattare alle forme sinuose e mai uguali degli elementi D.H'ILs.

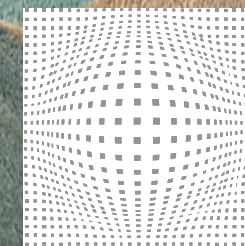
*The collection presented here is the result of careful research of products, identified because they can offer added value to **D.H'ILLS** world by D.Home Italia.*

*A whole range of items combinable by color and texture to create the perfect environment in every solution. May it be a living room, hotel lobby, entertainment space, office, etc.*

*From soft velvet to iridescent fabric to "crumpled" velvet, to offer a complete and irreplaceable range of products.*

*Easy to coordinate, these items can be used by the most demanding customer, both in terms of their look and the performance they provide.*

*All fabrics inside the collection are **BI-ELASTIC**, an essential peculiarity in order to adapt to the sinuous and never equal shapes of D.H'ILs elements.*



**D.HOME**  
DESIGN AND RESEARCH BY DONA

[www.dhomeitalia.it](http://www.dhomeitalia.it)

0445 490032 / [info@dona.it](mailto:info@dona.it)

®

S

E

I

T

E

D



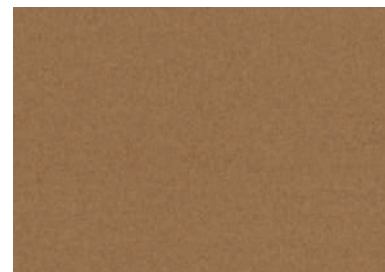
## OLIVO



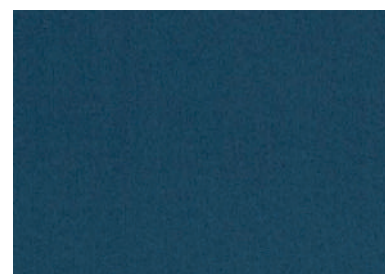
BLACK FOREST 01



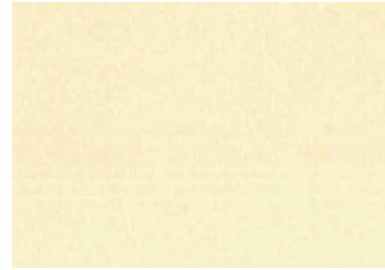
LEMON 02



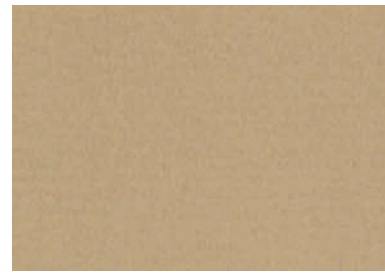
NATURAL 03



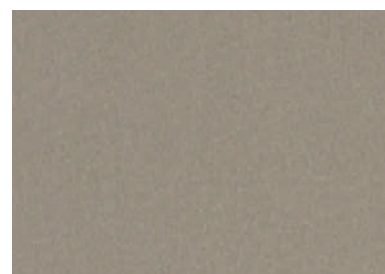
MOONLIGHT BLUE 04



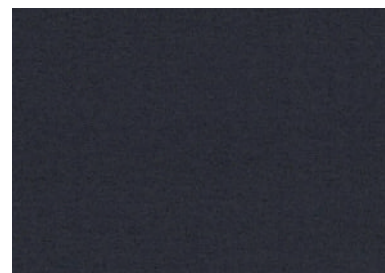
VANILLA CUSTARD 05



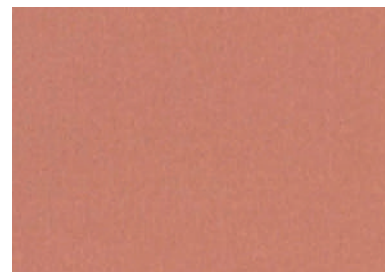
WARM SAND 06



ELEPHANT 07



DARK SLATE 08



ROSE CLOUD 09

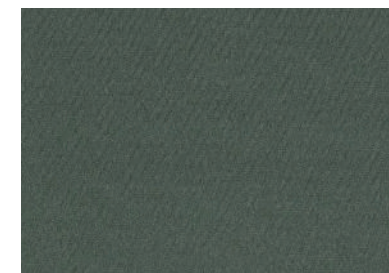


MARSALA 10

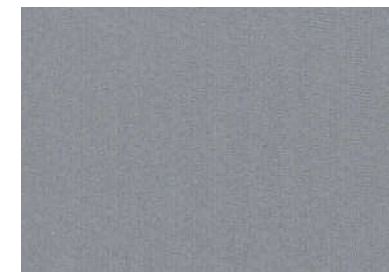
## VITE



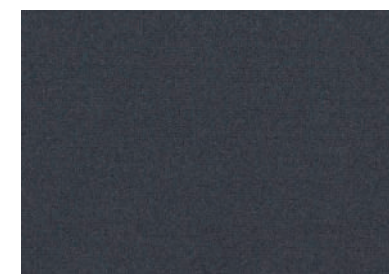
SENECA ROCK 01



SILVER PINE 02



DOVE 03



GRAPHITE 04



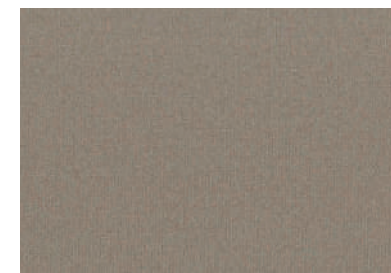
TENDER PEACH 05



APPLE CINNAMON 06



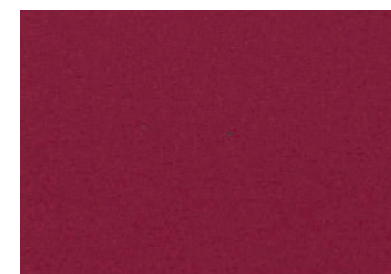
TORTOISE SHELL 07



ATMOSPHERE 08



NOSTALGIA ROSE 09

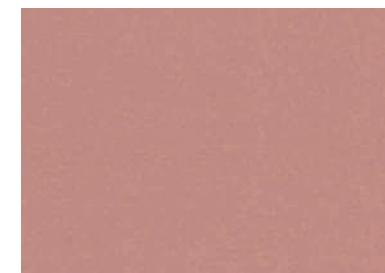


RASPBERRY WINE 10

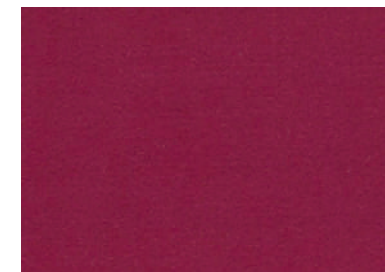
## MORA



FLAME 01



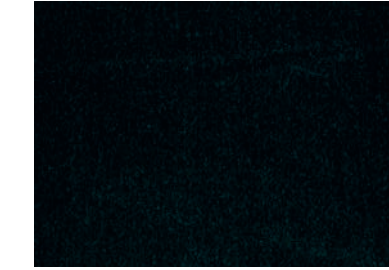
DUSTY PINK 02



VIRTUAL PINK 03



DARK PURPLE 04



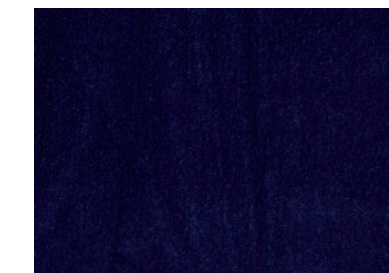
DEEP TEAL 05



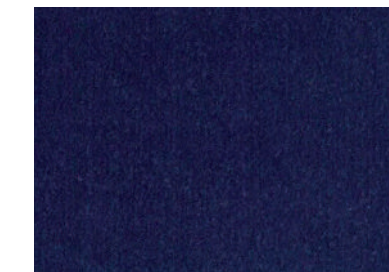
SMOKED PEARL 06



PROVINCIAL BLUE 07



LEGION BLUE 08

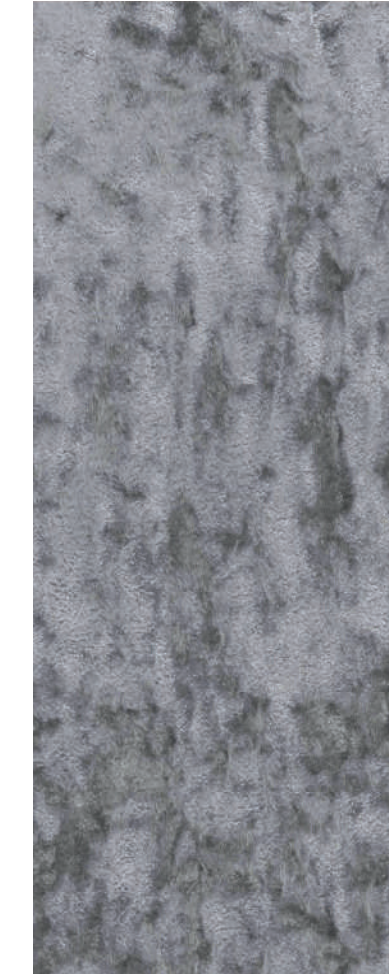


INSIGNIA BLUE 09



JET BLACK 10

## MIRTO



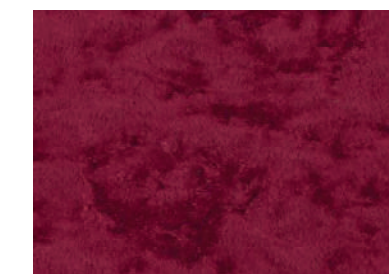
MOON MIST 01



HARVEST GOLD 02



CARNELIAN 03



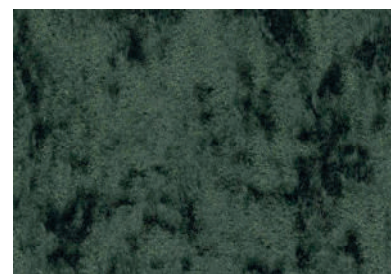
CERISE 04



RAINY DAY 05



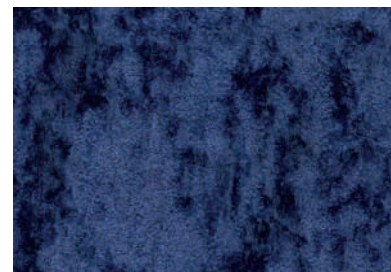
CEMENT 06



EVERGREEN 07



VELVET MORNING 08



DEEP COBALT 09



PATRICIAN PURPLE 10